



TLC
Solutions that Deliver
Phone: 800.325.7759
FAX: 304.229.0295
www.TLCdelivers.com



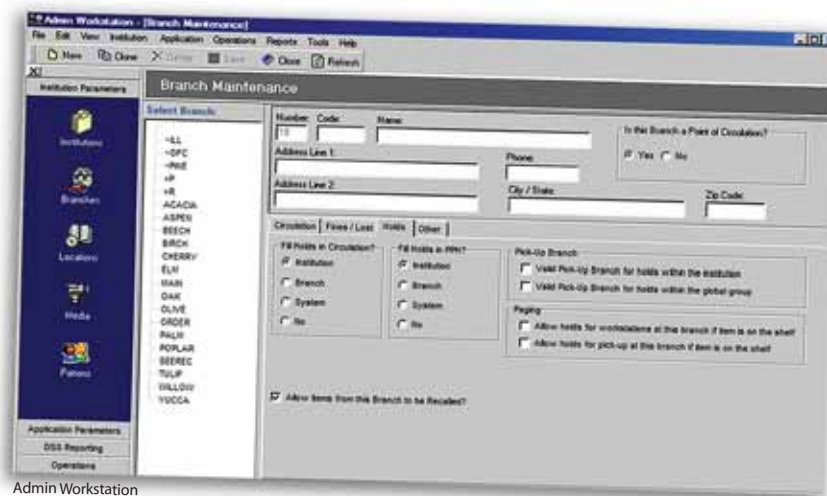
CARL•X is a next generation ILS designed for (and by) medium to large public libraries. CARL•X uses established, thoughtfully created design and development principles. It showcases libraries' individual strengths, while freeing staff from routine functions. This UNIX® and SQL/Oracle®-based, open-system solution uses Web and MS Windows® client software to offer an array of services and features.

CARL•X serves the needs of the largest libraries, but is a scalable system. CARL•X is also able to handle the demands of consortia of any size, while preserving each library's autonomy.

CARL•X is designed to enhance the public library's service mission. Patrons can benefit from retail components such as eCommerce, cover art, Netflix-like functionality, and CARL•X's use of Web 2.0 technologies. Windows clients and the Web enable key add-on modules such as Online Selection & Acquisitions, a Web-based interface that merges acquisitions and collection development processes.

User Friendly Staff Clients

CARL•X's flexible features adapt to how you work. The graphical user interfaces for Staff and Administrative Workstations simplify staff routines such as system administration and modification to configuration files for library policy enforcement. Both workstations feature Microsoft Outlook®-style toolbars for easy navigation through multiple features, including Dynamic Parameter system settings, Application Security settings, CARL•Decision Reports, and CARL•X Operations management.



Admin Workstation



CARLweb Staff Client

Modular and Powerful Multilingual OPAC/Portal Interfaces

CARLweb™ constitutes the core of CARL•X's customizable, multilingual OPAC environment. CARLweb uses Unicode-based architecture; it can present any language, including those with non-Roman characters. CARLweb offers powerful search capabilities with easily accessed interfaces for diverse communities. It also provides outstanding integration and presentation of multimedia/multiformat metadata, including ebook, photo, audio, and video collections. Our open access to CARLweb's APIs and modular approach to OPAC functionality maximize your ability to customize your interface and build a portal that blends with your Web site.

Offer an Even More Powerful OPAC Experience with These Options:

Portal and Personalization Options

A functional suite of portal and personalization tools may be selected a la carte and integrated into CARLweb. Patrons may pay fines and fees using a credit card, create personal profiles, save favorite searches, register for RSS feeds, and receive program event alerts via email. Patrons may create personal lists to save titles to their "bookshelf" to place holds or keep items in a Netflix-like queue.



eCommerce at Los Angeles Public Library



AquaBrowser Library

Search Options

AquaBrowser Library® is a visual faceted search that provides a progressively interactive experience. AquaBrowser uses search technology that integrates subscription and external sources with your catalog. Patrons can view results from electronic subscriptions, online databases, periodicals, and other sources integrated with catalog results.

Endeca® combines traditional multi-word querying with "Guided Navigation," exposing a multitude of related terms, headings, formats, and other dimensions that help patrons successfully search. It builds context around each search, so your patrons are constantly prompted with useful next steps. Guided Navigation prioritizes and organizes relevant information for the patron.

KCweb, included with the core system, allows young users to find library information in a fun and easy way. Children can access your library collection and over 29,000 links pre-selected for appropriate content via KCweb.

CARL•X: Used By Busy Libraries

CARL•X is based on CARL•Solution®, the same ILS used in some of the busiest libraries in the world. CARL systems are known for simple, elegant interfaces, streamlined backroom workflows, and high transaction processing.

Libraries using CARL include Los Angeles Public Library, Arlington Public Library, Chicago Public Library, Denver Public Library, Phoenix Public Library, and the National Library Board of Singapore.

For a personal consultation, call 800.325.7759.